

WHO Perspectives on Strengthening Nursing and Midwifery in the European Region

Dr Hans Kluge, Director

Division of Health Systems and Public Health

Special Representative of the Regional Director on M/XDR-TB

Outline

- Background and European context
- WHO European Strategic Directions for Strengthening Nursing and Midwifery
- The Way Forward

Tallinn Charter: Strengthening health systems with renewed emphasis on public health

Social values



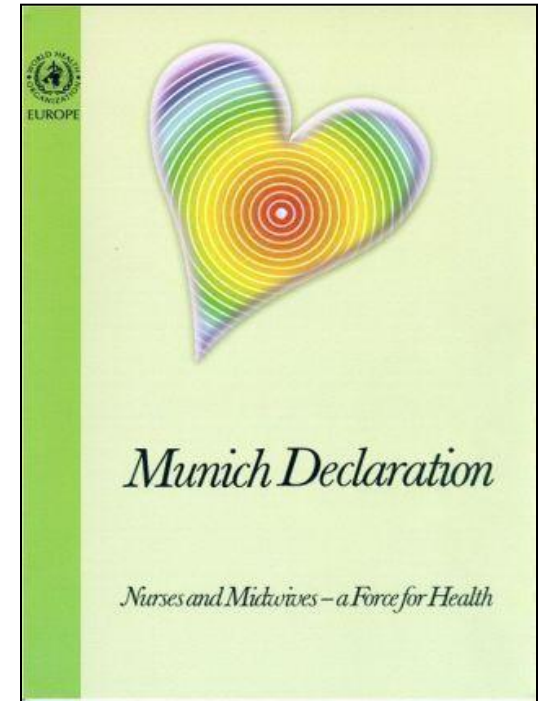
Background: Munich Declaration

“Nurses and midwives have key and increasingly important roles to play in society’s efforts to tackle the public health challenges of our time.”

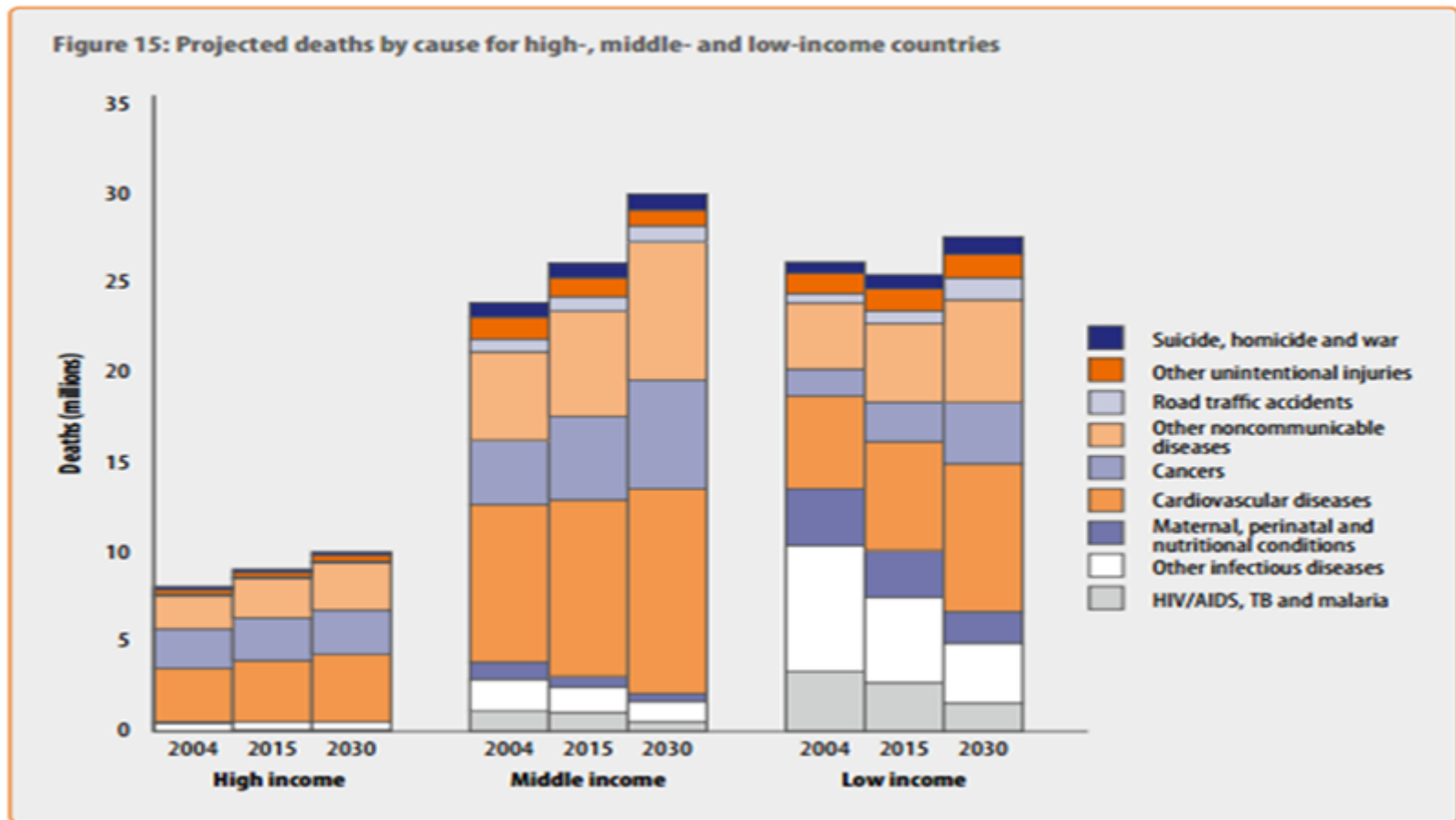
(Source: Nurses and Midwives: A force for health, WHO Europe, 2000)

“There are significant progresses but there are still a huge diversity regarding nursing and midwifery between countries in the European Region.”

(Source: Nurses and Midwives: A force for health, WHO Europe, 2009)



Projected Cause of Death - Income



Source: WHO Global Burden of Disease 2004.

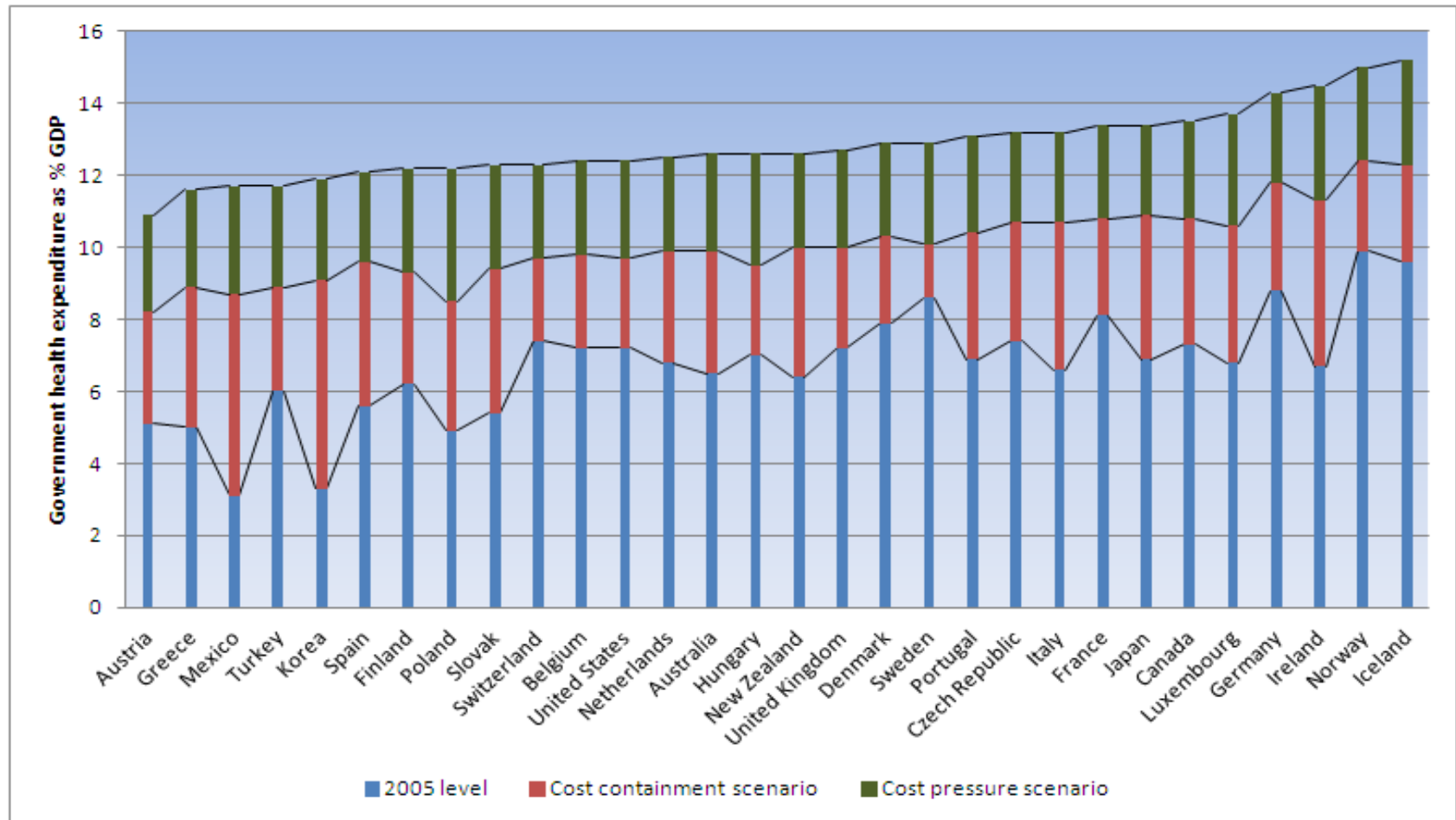
Global Burden of Disease 2004 – 2030

Figure 27: Ten leading causes of burden of disease, world, 2004 and 2030

2004 Disease or injury	As % of total DALYs	Rank	Rank	As % of total DALYs	2030 Disease or injury
Lower respiratory infections	6.2	1	1	6.2	Unipolar depressive disorders
Diarrhoeal diseases	4.8	2	2	5.5	Ischaemic heart disease
Unipolar depressive disorders	4.3	3	3	4.9	Road traffic accidents
Ischaemic heart disease	4.1	4	4	4.3	Cerebrovascular disease
HIV/AIDS	3.8	5	5	3.8	COPD
Cerebrovascular disease	3.1	6	6	3.2	Lower respiratory infections
Prematurity and low birth weight	2.9	7	7	2.9	Hearing loss, adult onset
Birth asphyxia and birth trauma	2.7	8	8	2.7	Refractive errors
Road traffic accidents	2.7	9	9	2.5	HIV/AIDS
Neonatal infections and other ^a	2.7	10	10	2.3	Diabetes mellitus
COPD	2.0	13	11	1.9	Neonatal infections and other ^a
Refractive errors	1.8	14	12	1.9	Prematurity and low birth weight
Hearing loss, adult onset	1.8	15	15	1.9	Birth asphyxia and birth trauma
Diabetes mellitus	1.3	19	18	1.6	Diarrhoeal diseases

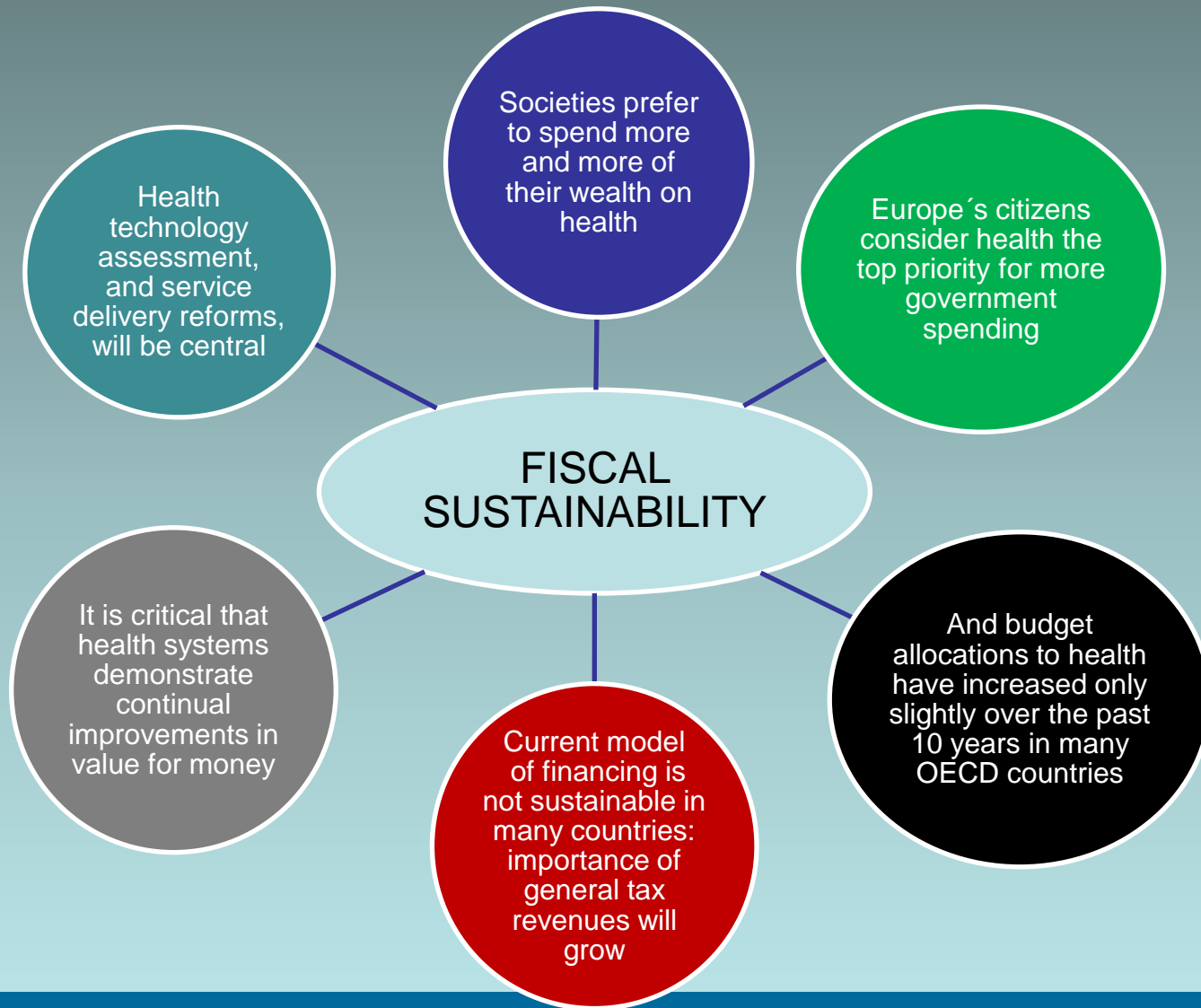
Source: WHO Global Burden of Disease 2004.

Projected government health spending in 2050 - OECD countries



Source: Chapter 3, OECD Economic Outlook No. 79 (June 2006)

How much of a threat is expenditure growth?

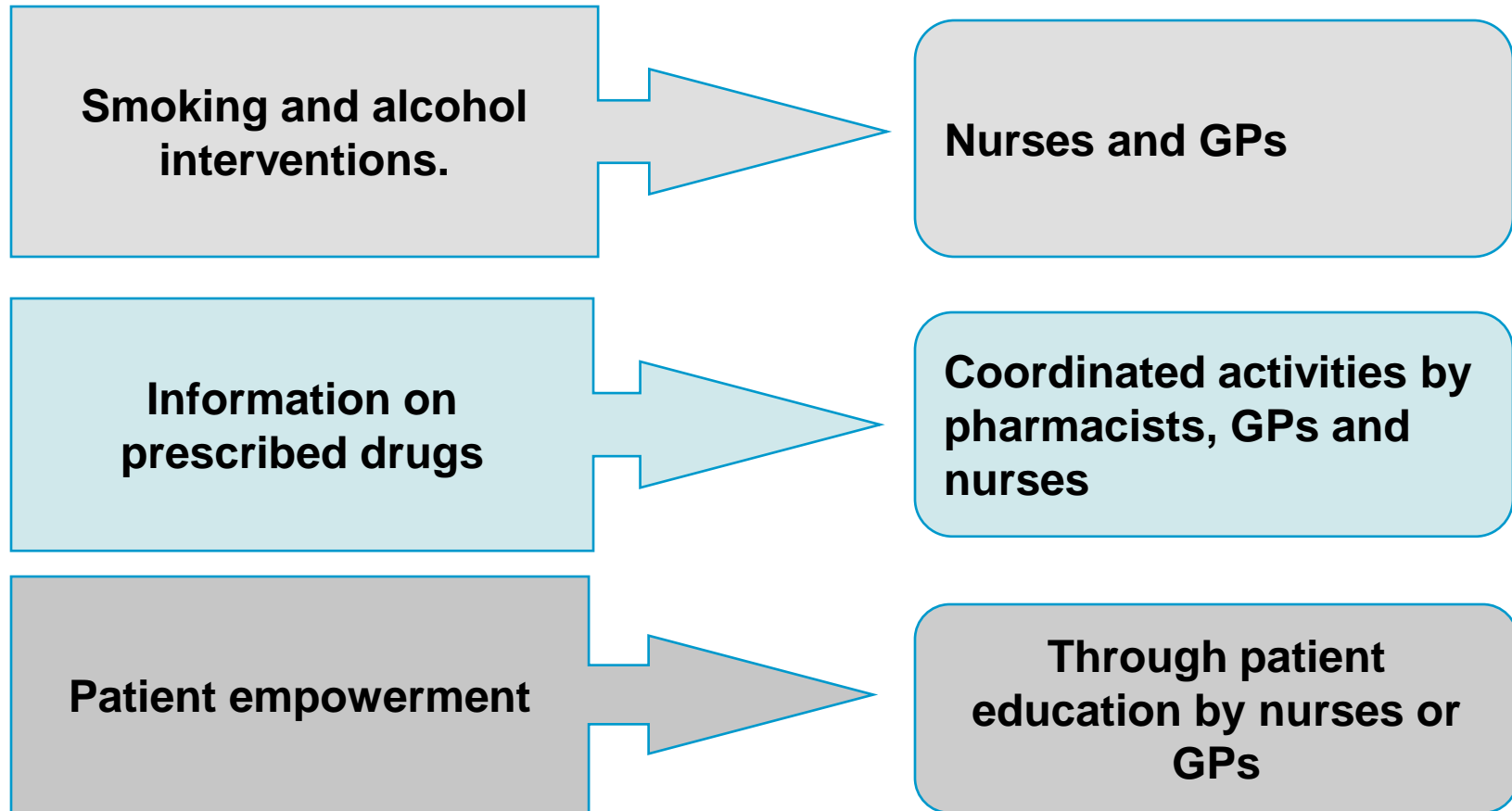


Evidence shows: Cochrane review

(Laurent et al 2005)

- **“In primary care, it appears that appropriately trained **nurses** can produce as high quality care and achieve as good health outcomes for patients as doctors. However, the research available is still quite limited”.**

Evidence based interventions in PHC on NCDs



Sources: Options for preventive interventions on CVD and diabetes in PHC, 2012, draft NIVEL

Strategic Directions on Nursing and Midwifery in the WHO European Region

- Scaling up and transforming **education and training**
- Building **regulatory frameworks**
- Reviewing **professional roles** and skill mix and strengthening **leadership**
- Better health workforce **planning and management**
- Ensuring **evidence based quality of care**

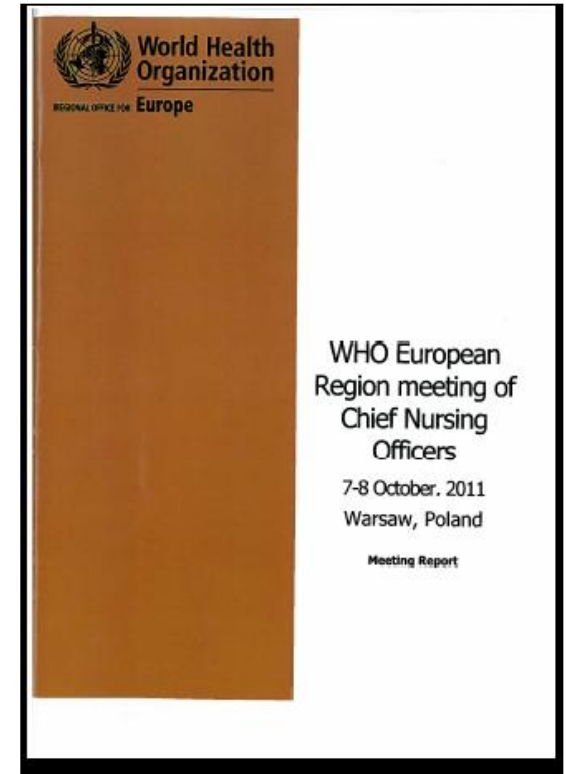
Revival of the WHO European Network of Chief Nursing Officers



WHO Meeting of CNOs, Warsaw, Poland, 7-8 October 2011

Key conclusions of the WHO CNOs meeting in Warsaw

- ✓ Develop a **shared vision**, contribute to the wider health agenda
- ✓ **Collect evidence**, facilitate information exchange and **promote good practice**
- ✓ Re-assure **political commitment** and technical collaboration
- ✓ Re-enforce **strategic directions** and a **way forward**
- ✓ Convene regional CNO meetings biennially



Strengthening partnerships, networks (2)

- Regional **network of experts** on nursing and midwifery
- Collaboration on nursing activities in Member States
- European Forum of National Nursing and Midwifery Associations with WHO (**EFNNMA**)

16th annual EFNNMA meeting. Copenhagen, Denmark, 29-30 March 2012



Strengthening partnerships, building networks

- Re-established WHO **network of Government Chief Nursing Officers**
- European **network of WHO Collaborating Centres**

Meeting of the WHO CCs network. Copenhagen, 20-21 February 2012



The Process towards the Regional Committee (2014)

- Meeting of **expert group**, WHO Europe, May 2012
- Setting **goals and targets**, reviewing documents, designing a template for country case stories
- **Collecting evidence**, building portfolio of good nursing and midwifery practice
- **Consultations**
- Solid and evidence- based **Action Plan** for discussion at the Regional Committee (2014)

The Way Forward

